

PD1 (SJ01-91)

rev. 05/02/17
Cat#: ET1606-41

Product Type: Recombinant rabbit monoclonal IgG, primary antibodies

Species reactivity: Human

Applications: WB, IHC

Molecular Wt.: 32 kDa

Clone number: SJ01-91

Description: Pcd-1 (Programmed Cell Death-1 protein), also designated CD279, is a type I transmembrane receptor and a member of the immunoglobulin gene superfamily. Pcd-1 contains an immunoreceptor tyrosine-based inhibitory motif (ITIM) within the cytoplasmic domain, which is conserved between the mouse and human homologs. Expression of Pcd-1 is detected in mouse thymus, and it is induced in stimulated B and T cell lines, where it may play a role in the negative regulation of various immune responses. Receptors such as Pcd-1 function by recruiting tyrosine phosphatases, including SHP-1 and SHIP, which are responsible for altering various B cell responses. Additionally, in activated lymphocytes, Pcd-1 mediates the activation of the classical type of programmed cell death.

Immunogen:

Recombinant protein.

Positive control:

Human tonsil tissue.

Subcellular location:

Membrane.

Database links:

SwissProt: Q15116 (Human)

Recommended Dilutions:

WB: 1:500-1:1,000 **IHC:** 1:50-1:200

Storage Buffer:

1*TBS (pH7.4), 1%BSA, 40%Glycerol. Preservative: 0.05% Sodium Azide.

Storage Instruction:

Store at +4° C after thawing. Aliquot store at -20° C or -80° C. Avoid repeated freeze / thaw cycles.

Purity:

ProA affinity purified.

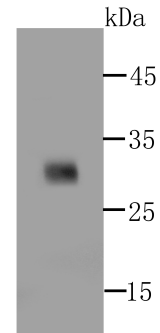


Fig1: Western blot analysis of over-expressed PD1(whole extracellular domain) on 293T cell lysate using anti-PD1 antibody at 1/500 dilution.

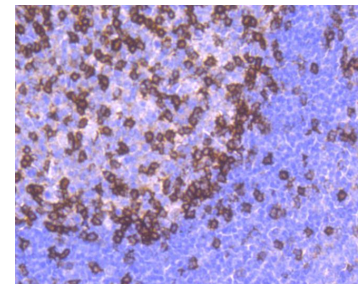


Fig2: Immunohistochemical analysis of paraffin-embedded human tonsil tissue using anti-PD1 antibody. Counter stained with hematoxylin.

Background References

1. Sato Y et al. The PD-1/PD-L1 axis may be aberrantly activated in occupational cholangiocarcinoma. *Pathol Int* N/A:N/A (2017).
2. Zhou ZH et al. The prognostic value and pathobiological significance of Glasgow microenvironment score in gastric cancer. *J Cancer Res Clin Oncol* N/A:N/A (2017).

Hangzhou HuaAn Biotechnology Co.,Ltd.

Orders: 0086-571-88062880 Support: 0086-571-89986345 Service mail: tech@huabio.com www.huabio.com



Applications: WB=Western blot IP=Immunoprecipitation IHC=Immunohistochemistry IF=Immunofluorescence FC=Flow cytometry
Species Cross-Reactivity: H=human M=mouse R=rat Hm=hamster Mk=monkey Mi=mink C=chicken Dm=D.melanogaster X=Xenopus Z=zebrafish
B=bovine Dg=dog Pg=pig Sc=S.