

Myc-Tag

rev. 09/14/15

Cat#: EM31105

Quantity: 100ul

Product Type: Mouse monoclonal IgG, primary antibodies

Isotype: IgG2b

Clone ID: A3-B4

Applications: WB, ICC, ELISA, IP, FC

Description: Myc gene encodes for a transcription factor that is believed to regulate expression of 15% of all genes through binding on Enhancer Box sequences (E-boxes) and recruiting histone acetyltransferases (HATs). c-Myc is commonly activated in a variety of tumor cells and plays an important role in cellular proliferation, differentiation, apoptosis and cell cycle progression. This Myc-Tag antibody detects Myc-tagged fusion proteins.

Specificity/Source: This antibody is produced by immunizing mice with synthetic peptide EQKLISEEDL (c-myc) conjugated to KLH.

Positive control: Myc-tagged recombinant protein.

Recommended Dilutions:

WB: 1:2,000

Storage Buffer:

1*TBS (pH7.4), 1%BSA, 40%Glycerol. Preservative: 0.05% Sodium Azide.

Storage Instruction:

Store at +4° C after thawing. Aliquot store at -20° C or -80° C. Avoid repeated freeze / thaw cycles.

Purity:

ProA affinity purified

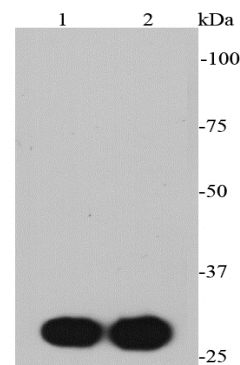


Fig1: Western blot analysis of Myc-tag protein on different cell lysates using anti-Myc-tag antibody at 1/2000 dilution.

Positive control:

Lane 1: N-terminal Myc-tag protein

Lane 2: C-terminal Myc-tag protein

Background References

1. "A quantitative atlas of mitotic phosphorylation." Dephore N., Zhou C., Villen J., Beausoleil S.A., Bakalarski C.E., Elledge S.J., Gygi S.P. Proc. Natl. Acad. Sci. U.S.A. 105:10762-10767 (2008)
2. "Transactivation of gene expression by Myc is inhibited by mutation at the phosphorylation sites Thr-58 and Ser-62." Gupta S., Seth A., Davis R.J. Proc. Natl. Acad. Sci. U.S.A. 90:3216-3220 (1993)

Hangzhou HuaAn Biotechnology Co.,Ltd.

Orders: 0086-571-88062880

Support: 0086-571-89986345

Service mail: tech@huabio.com

www.huabio.com



华安生物

Applications: WB=Western IP=Immunoprecipitation IHC=Immunohistochemistry IF=Immunofluorescence FC=Flow cytometry
Species Cross-Reactivity: H=human M=mouse R=rat Hm=hamster Mk=monkey Mi=mink C=chicken Dm=D.melanogaster X=Xenopus Z=zebrafish
B=bovine Dg=dog Pg=pig Sc=S.